



**trodat<sup>®</sup>**

Manual for  
creating colour stamps

with Illustrator  
(English)

# Contents

## Creating stamp masters with Illustrator

Creating a new master .....	3
Checking existing stamp masters.....	4
Checking imported elements.....	5
Creating and adjusting colours.....	6
Saving the file .....	7

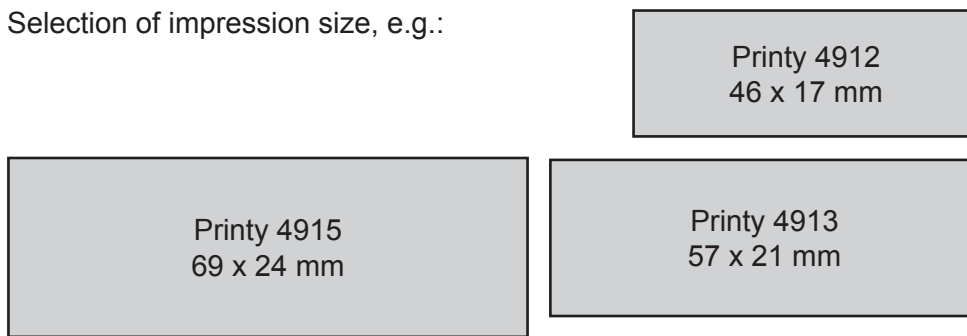
## Creating stamp masters with Illustrator

A few guidelines are needed in order to ensure further production when creating or adapting a stamp master with Illustrator.

It is essential that you first decide whether you are creating a new stamp or adapting an existing stamp master. If you are creating a new stamp, the correct set-up is important. If you are adapting an existing stamp master, attention must be paid to checking the correct set-up.

### Creating a new master:

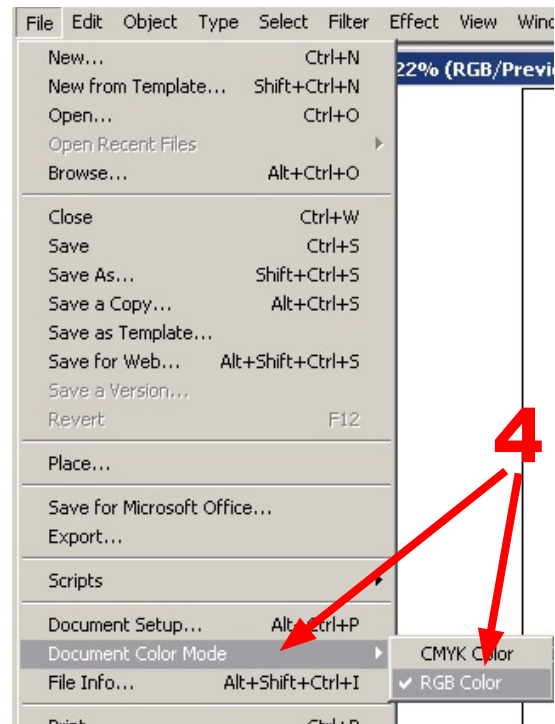
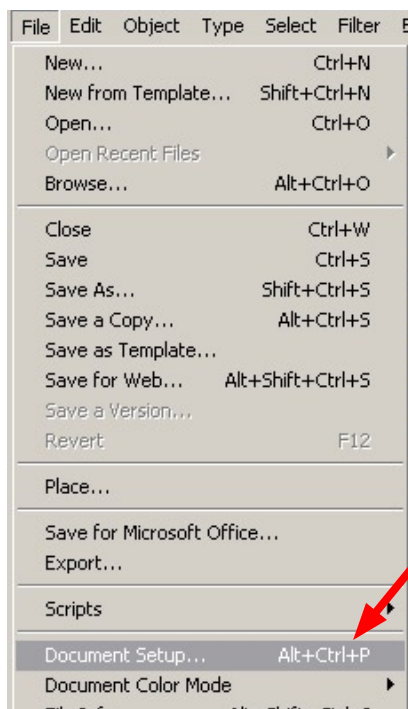
Selection of impression size, e.g.:



You will find a full list attached.  
= Dimensions from Trodat overlays!

Create a new document under the menu: „File/New“

1. The size of your document is not relevant in Illustrator; the correct stamp format is only helpful for the shape of the stamp.
2. The size of the document can be freely defined afterwards under the menu “File/Document format”.
3. The document colour mode must also be adjusted to RGB.
4. The document colour mode can be defined later under the menu “File/Document colour mode”.



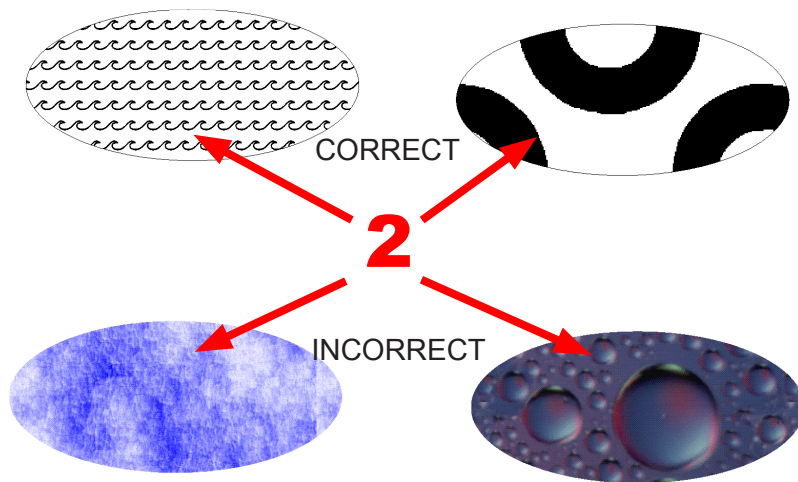
**Checking existing stamp masters:**

Open an existing Illustrator file under FILE > Open and check the configuration:

- 1 As Illustrator is vector-based, text and shapes can be created in any type and/or with any tool.
- 2 It is important that objects with a special fill are not filled with colour gradients or special effects which require a soft colour transition. The four basic colours red, green, blue and black are available for the colouring process.

Note:  
 Only vector files can be opened in Illustrator.  
 Picture format files must be imported.  
 You cannot edit imported files.

Checking the colouring process is described in detail on page 6.



Warning:  
 Text should be converted to paths before exporting.  
 In the menu: "Text/convert to paths"

Otherwise only the stamp master guidelines need to be taken into account:

- Size of the stamp
- Distance of the different colours from one another

### Checking imported elements:

It is difficult to conduct a check for imported files.

It is advisable to always revert to an original file (Illustrator file), as the majority of errors develop when a vector file is saved in another format.

If this procedure is saved to begin with, it cannot be reversed in the file later.

The file must be saved or exported as a NEW file from the original file!

**1** Have the elements been saved WITHOUT soft edges?

To check the soft edges, use the magnifying glass tool and zoom into the various elements to at least 900%.

If elements in your master have soft edges, they must be re-created in Illustrator!



**2** The colours for imported files can be checked with the pipette with Illustrator CS Version onwards!

Simply click on the colour that you want to check with the pipette. The colour can then be checked

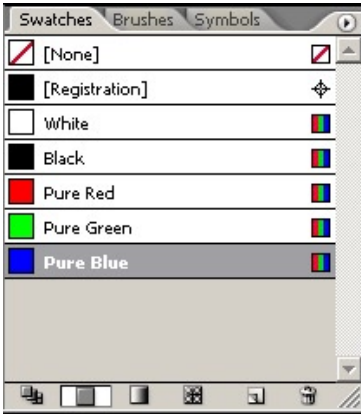
**3** in the colour palette.



## Creating and adjusting colours:

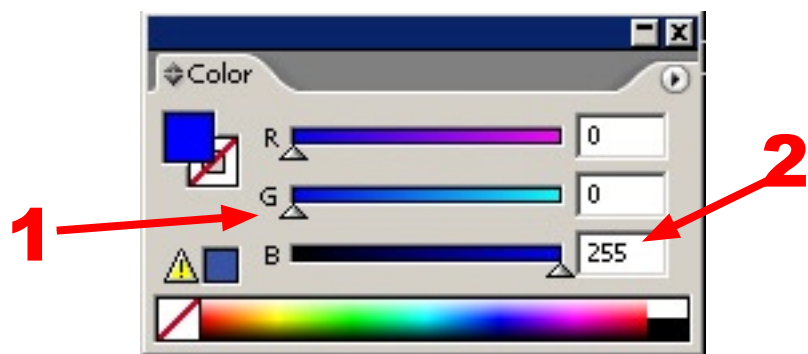
There are a total of 4 colours available for creating a stamp: red, green, blue and black.

These must be precisely defined in order to be able to change the graphic. Illustrator provides you with the following options of defining the colours and/or colouring an object.



When colouring via the Colour Fields it is important to check the colours in the „colours“ palette.

1. It is important to set RGB colours.
2. It is important to enter the correct values for the components.



The values for each must be entered with 0 or 255. Values in between will not work!

### Colour settings:

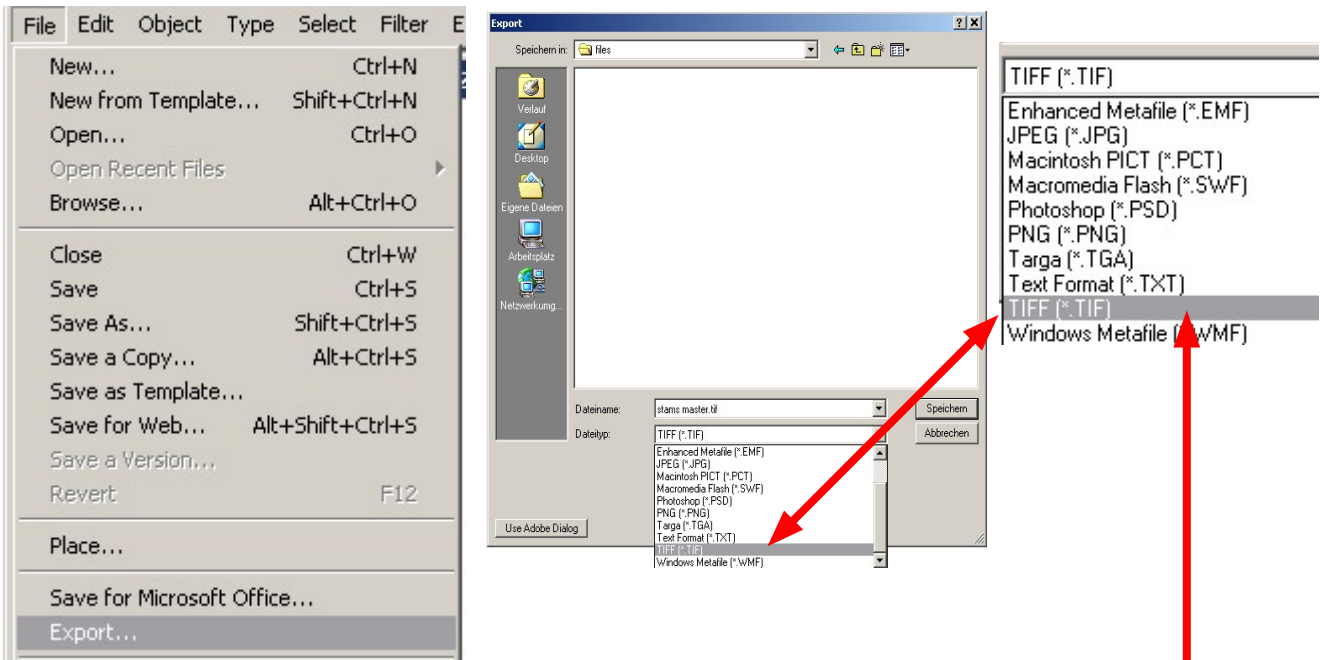
- Red: R=255 / G=0 / B=0
- Green: R=0 / G=255 / B=0
- Blue: R=0 / G=0 / B=255
- Black: R=0 / G=0 / B=0

You can simply colour in objects or text via the colour palette. Just mark the required object, check that the colour has been adjusted correctly and insert the colour value.

**Saving the file:**

Select „Save As“ from the „File“ menu and save your stamp master as an .AI file. (Illustrator file). Select a name; it is recommended that you choose a name that does not contain any umlauts or special symbols.

You have to export the file to upload it to the Trodat Shop. You can find this option under “File” > “Export”.



Select your required file format in the subsequent „Export“ window. You can choose from a variety of formats. Various formats are accepted and processed in the Trodat Shop. Illustrator does not save all file formats in the manner required in the Shop.

1. The file format you use must have a “Anti-alias” setting in the file format setting window. This setting must be deactivated! This file format cannot be used if this option is unavailable.
2. Also make sure that you set a resolution of 300 dpi.

Your file is now ready to upload for stamp creation!

Safe file formats:

- TIF
- BMP
- GIF
- PNG

